



The COVID-19 Pandemic

Dale W. Bratzler, DO, MPH, MACOI, FIDSA

Chief COVID Officer – University of Oklahoma

Professor College of Medicine

Enterprise Chief Quality Officer – OU Health

Professor and Chair, Department of Health Administration and Policy

Hudson College of Public Health

Edith Kinney Gaylord Presidential Professor

Email: dale-bratzler@ouhsc.edu

Office Phone: (405) 271-3932

July 26, 2021

National Ranking – Daily New Cases per 100,000 Population

Top Ten

State or Territory	Daily Average New Cases in the Last 7 Days	Daily New Cases per 100,000 population in the Last 7 Days
Arkansas	1,824	60
Louisiana	2,414	52
Florida	10,452	49
Missouri	2,410	39
Mississippi	911	31
Alabama	1,495	30
Nevada	850	28
Alaska	195	27
U.S. Virgin Islands	26	24
Oklahoma (July 23 data)	938	24

<https://www.nytimes.com/interactive/2021/us/>

+Since start of the pandemic.

Data as of July 26, 2021

National Ranking – New Cases per 100,000 Population in the Past Week

Top Ten

State or Territory	7-day Case Rate per 100,000 population
Louisiana	363.5
Florida	340.7
Arkansas	322.5
Missouri	269.1
Nevada	193.1
Mississippi	189.9
Alabama	184.8
Oklahoma	179.4
Alaska	177.4
Virgin Islands	168.1

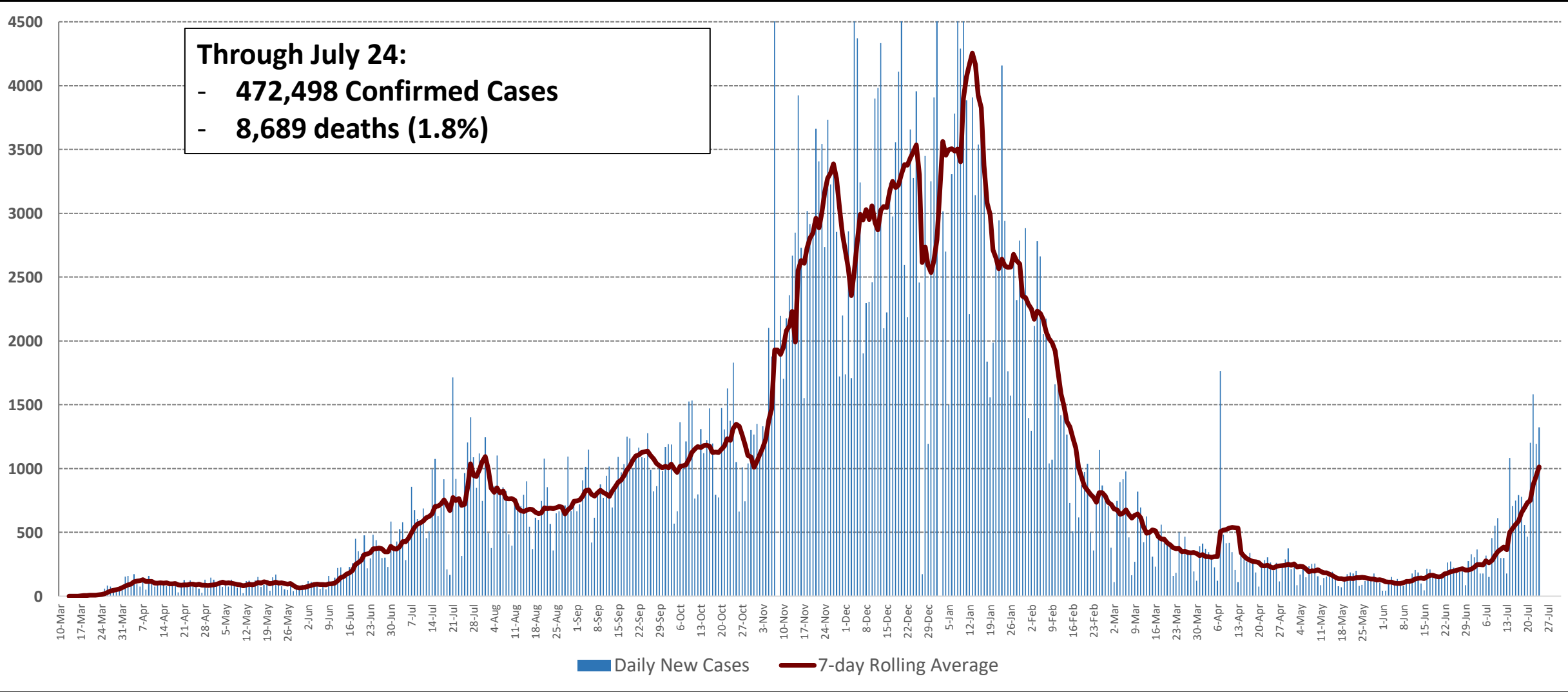
https://covid.cdc.gov/covid-data-tracker/#cases_casesper100klast7days

Data as of July 26, 2021

Daily New Cases with 7-day Rolling Average

Oklahoma

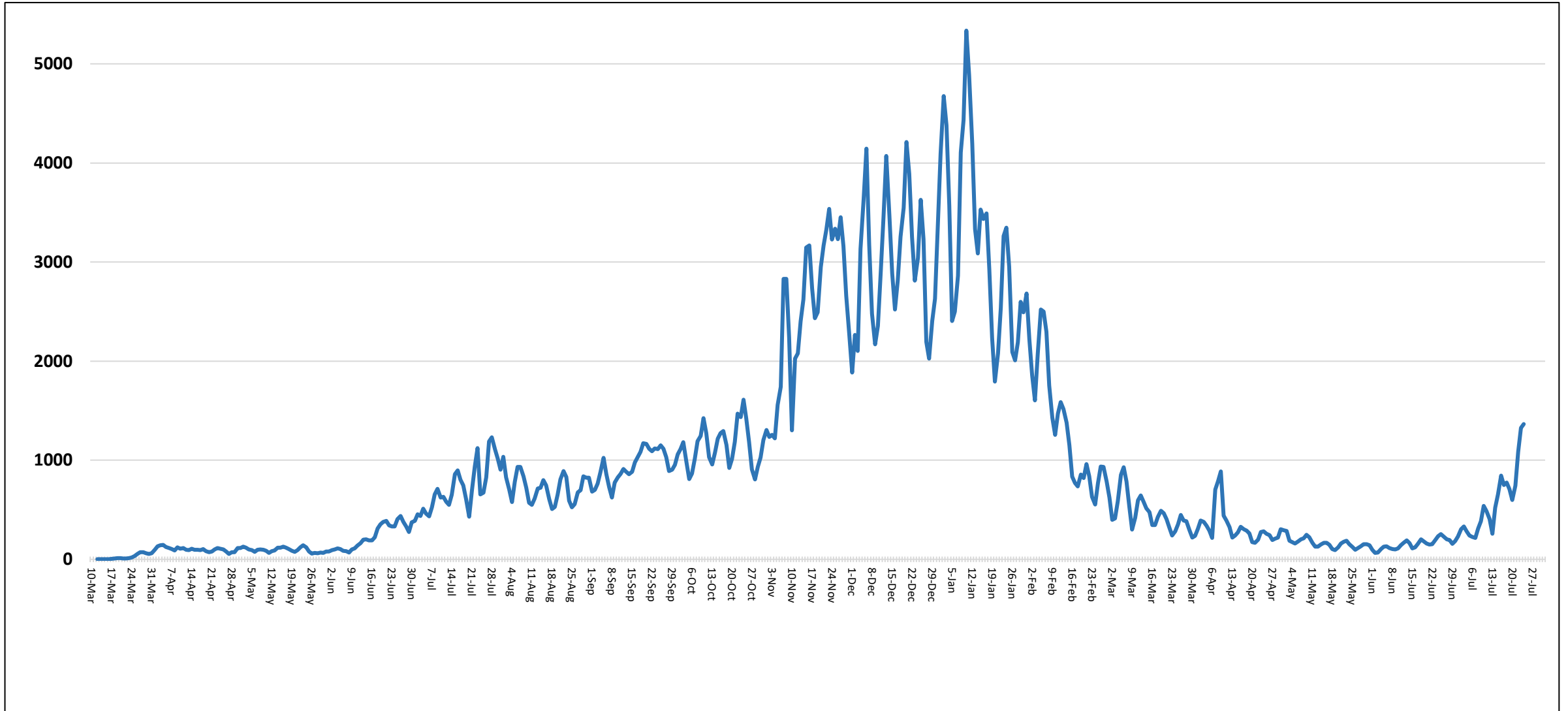
Through July 24:
- 472,498 Confirmed Cases
- 8,689 deaths (1.8%)



■ Daily New Cases — 7-day Rolling Average

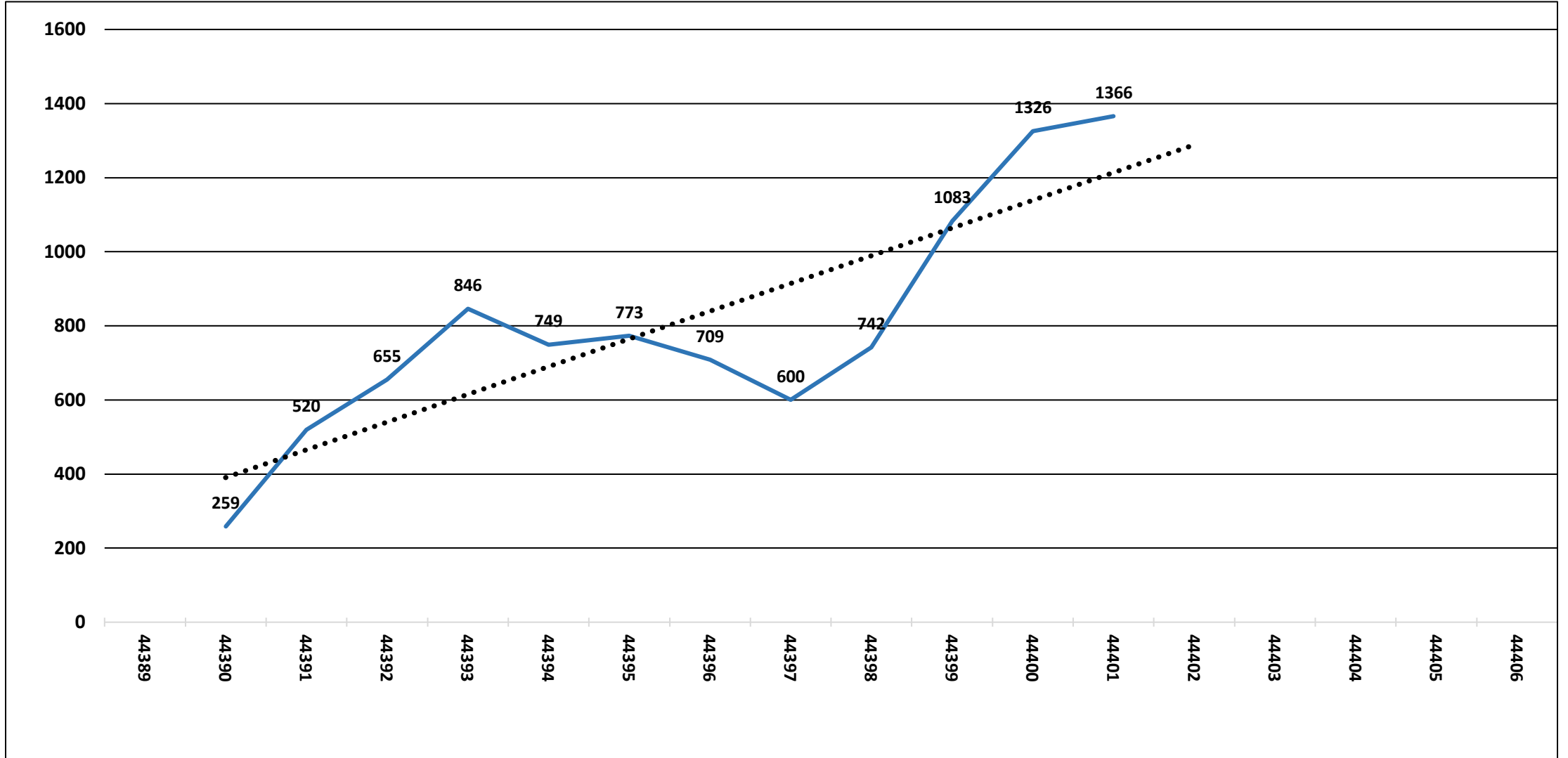
Three-day Rolling Average of New Cases

Oklahoma



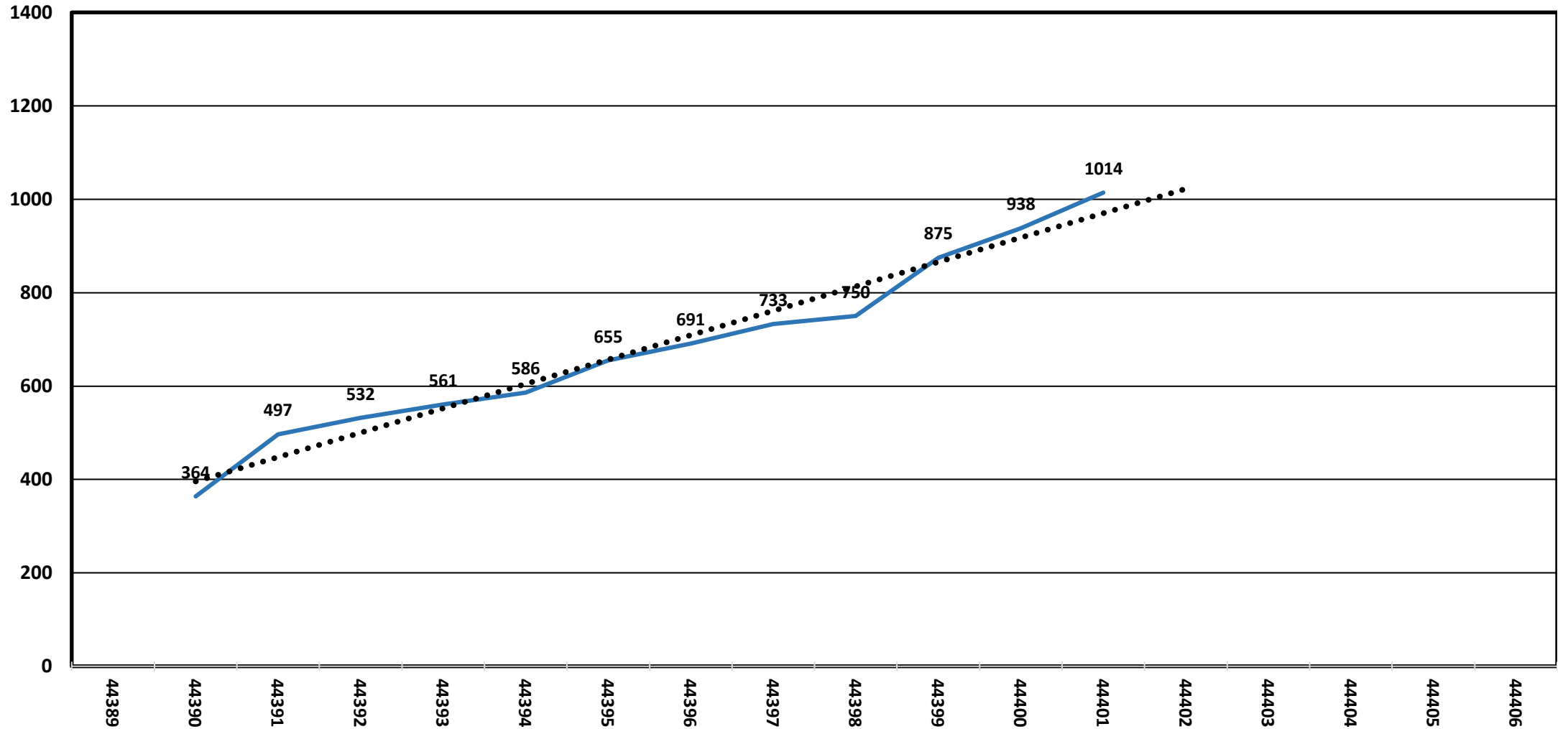
Three-day Rolling Average of New Cases

Oklahoma – Last 14 days



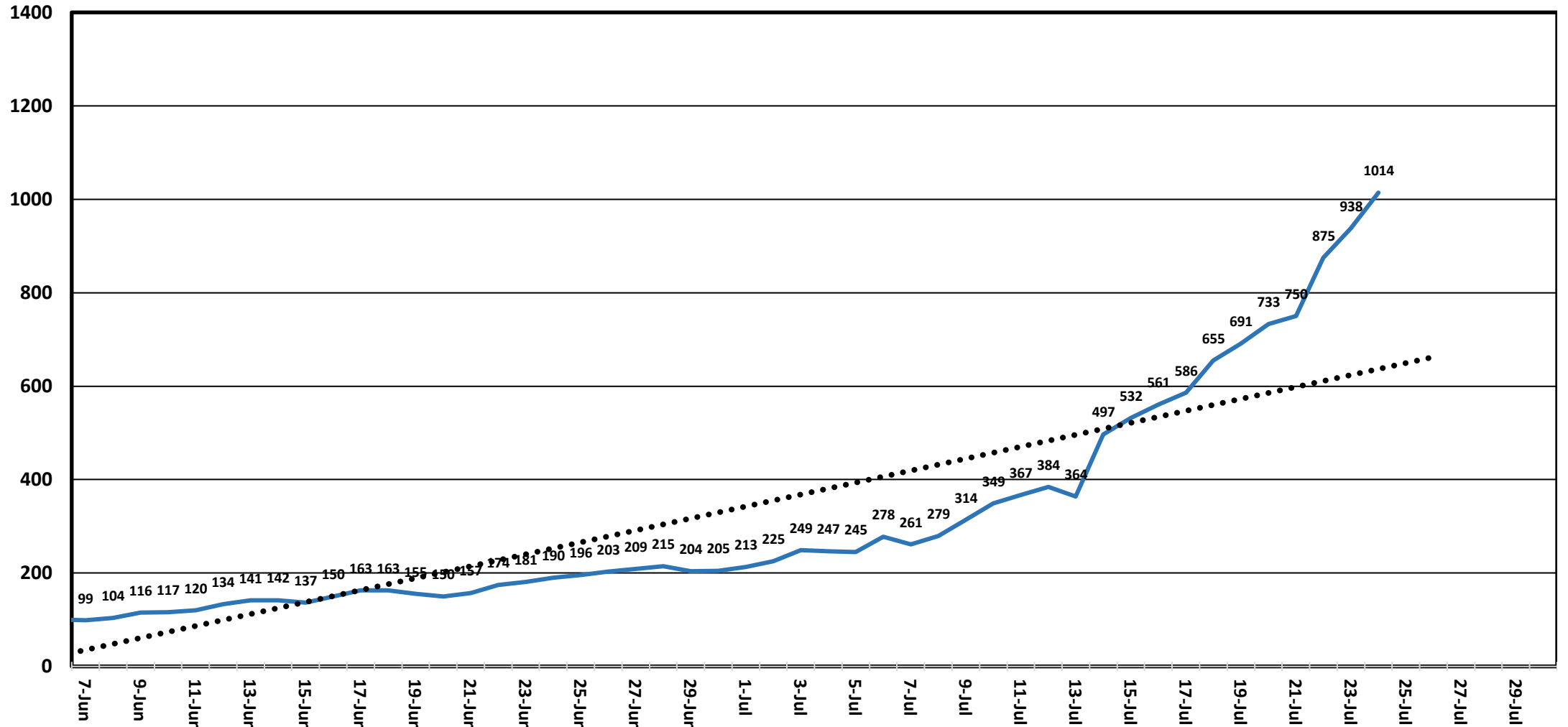
Seven-day Rolling Average of New Cases

Oklahoma – Last 14 days



Seven-day Rolling Average of New Cases

Oklahoma – Since June 7



	Daily Average Cases	Daily New Cases per 100,000 population in the Last 7 Days
Oklahoma	938	24
County:		
Ottawa	27	87
Craig	11	77
Delaware	21	48
Adair	9	42
Pushmataha	4	40
Rogers	36	39
Johnston	4	35
Mayes	14	34
Cimarron	<1	33
Washington	17	32
Latimer	3	28
Pawnee	4	27
Creek	19	27
Bryan	13	26
Le Flore	13	25
Tulsa	160	25
Muskogee	17	24
Choctaw	4	24
McClain	9	23
Haskell	3	21

State population incidence through July 23

County data last updated July 21:

Oklahoma County – 11*

Tulsa County – 25*

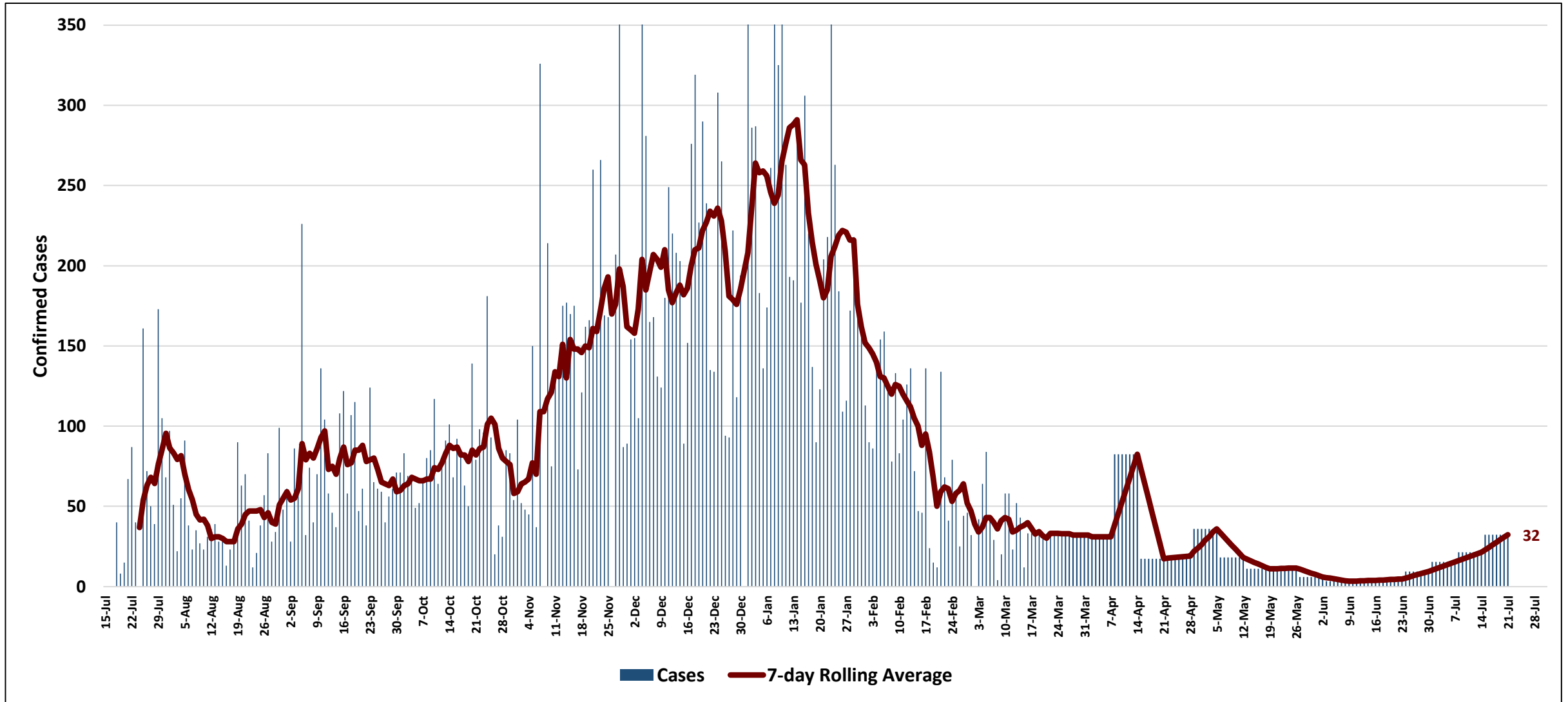
Cleveland County – 11*

*Daily New Cases per 100,000 population in the past week.

County	New Cases in the Past Week*
TULSA	1120
OKLAHOMA	624
ROGERS	254
CLEVELAND	227
OTTAWA	190
COMANCHE	176
DELAWARE	144
CREEK	133
MUSKOGEE	116
WASHINGTON	116
WAGONER	101
MAYES	98
CANADIAN	97
BRYAN	88
LE FLORE	88
CRAIG	76
OSAGE	67
ADAIR	66
MCCLAIN	65
CARTER	62
CHEROKEE	62
SEQUOYAH	60
POTTAWATOMIE	58

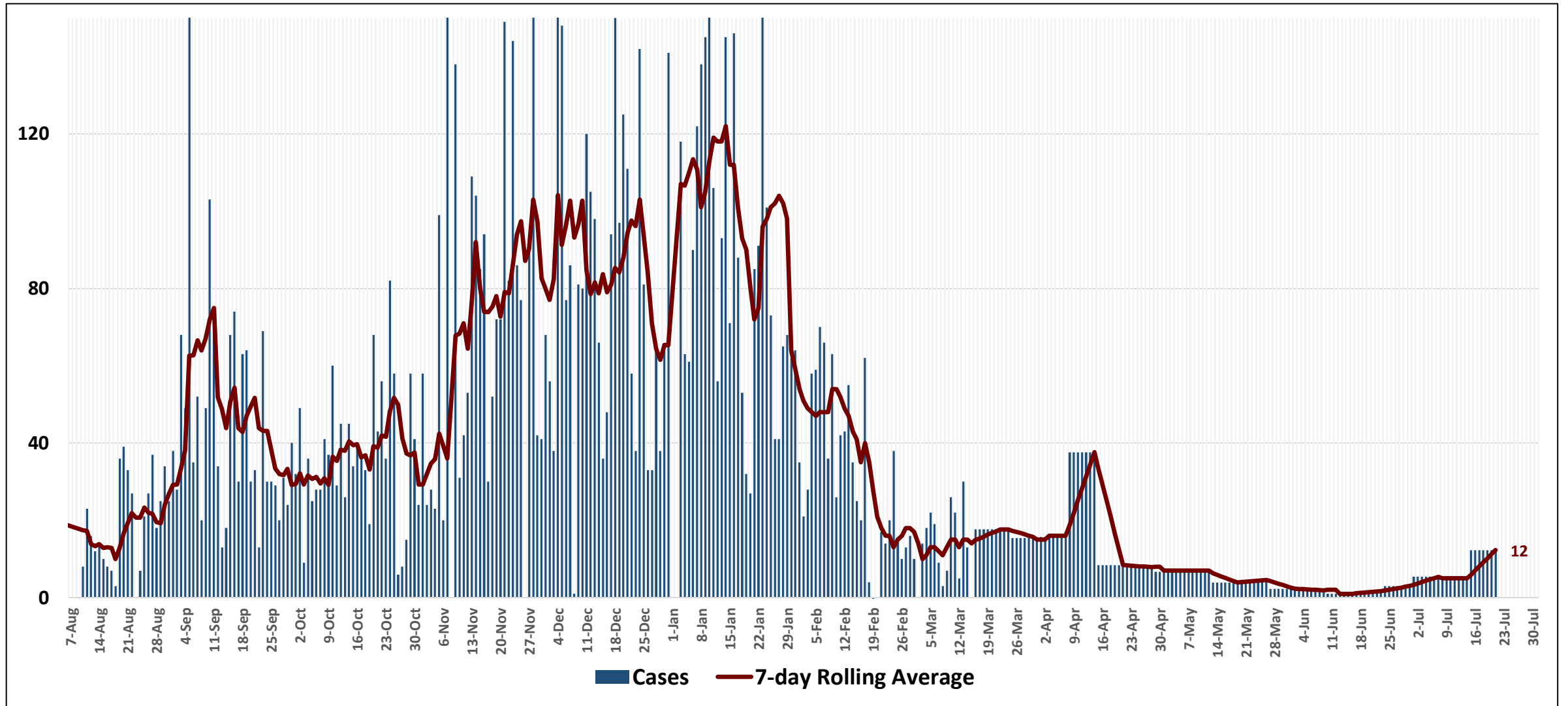
*Data reported by OSDH
on July 21, 2021.

Cleveland County Confirmed Cases and 7-day Rolling Average



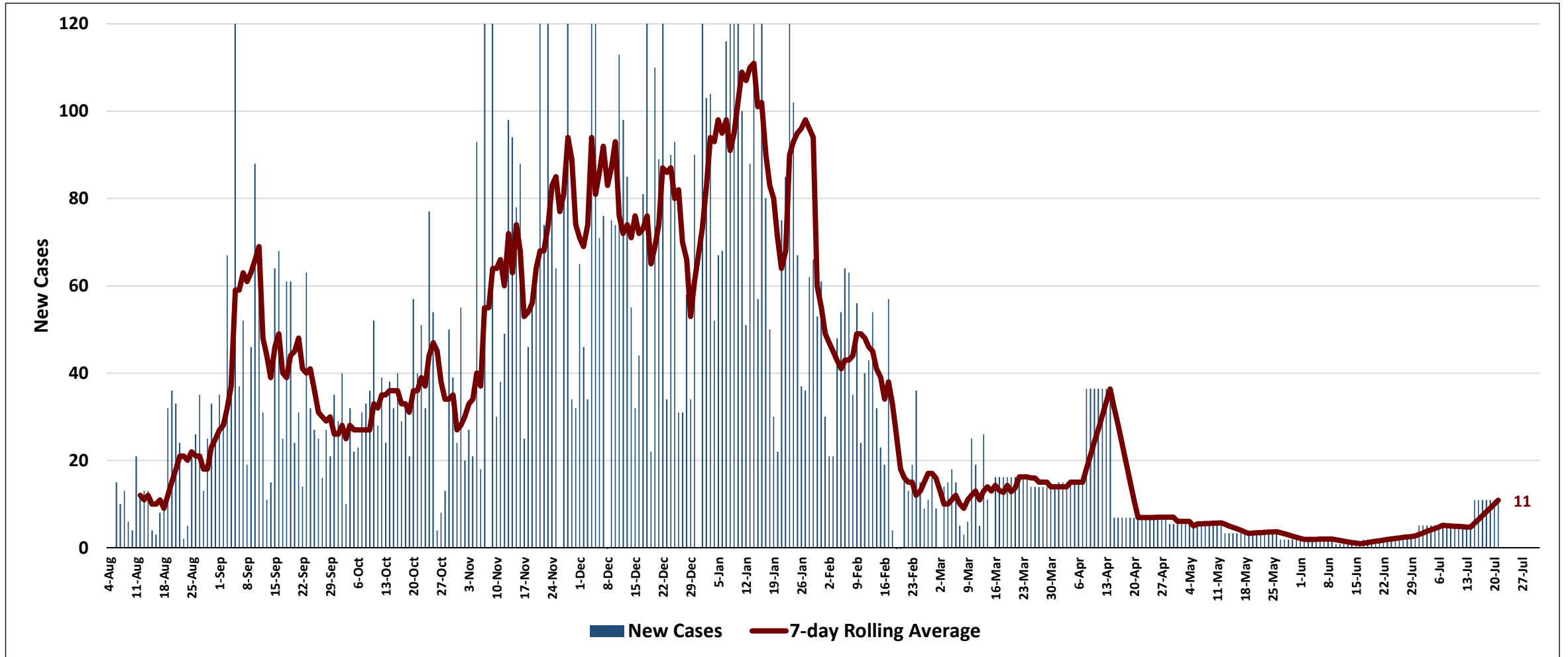
Through July 21

Norman Confirmed Cases and 7-day Rolling Average



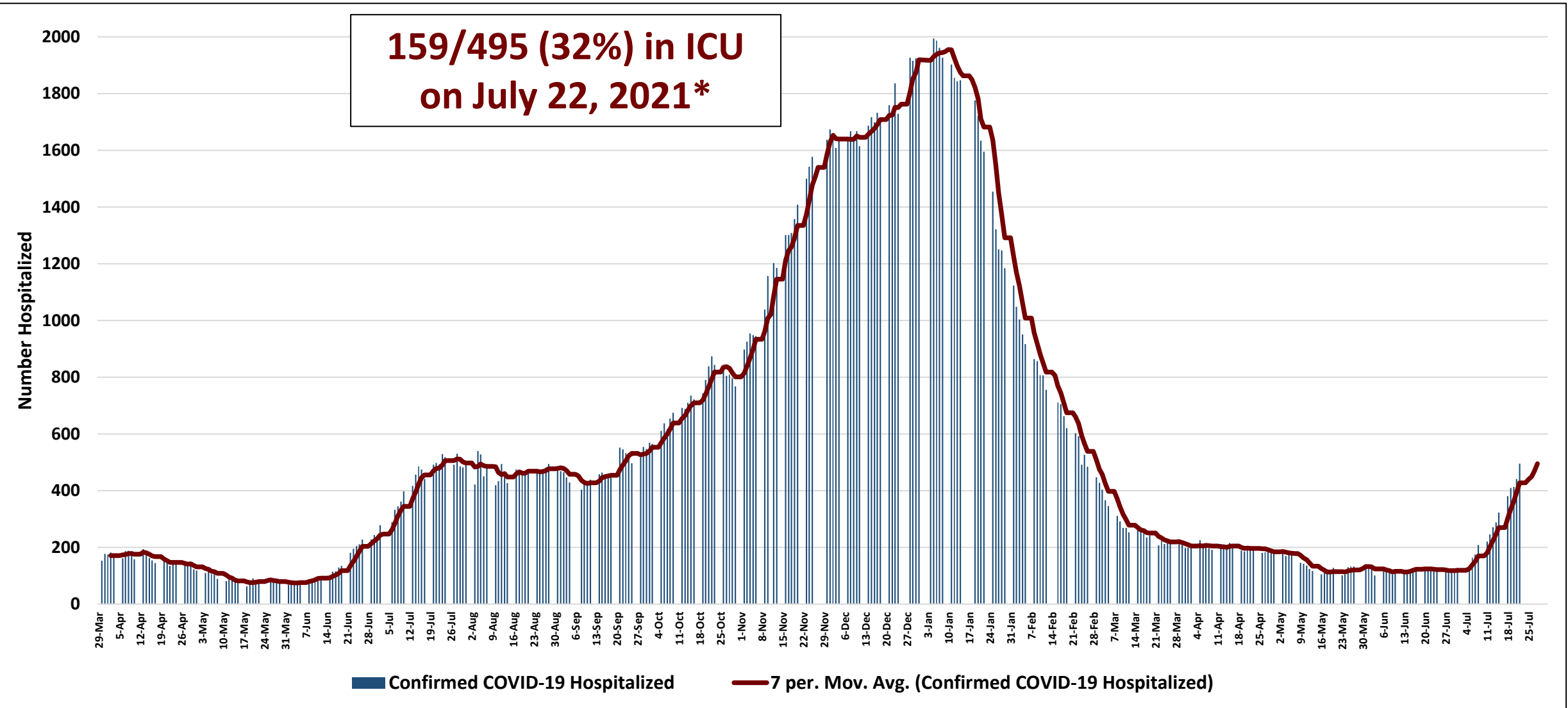
Through July 21

Norman ZIP Codes (069, 071, 072) - Cases

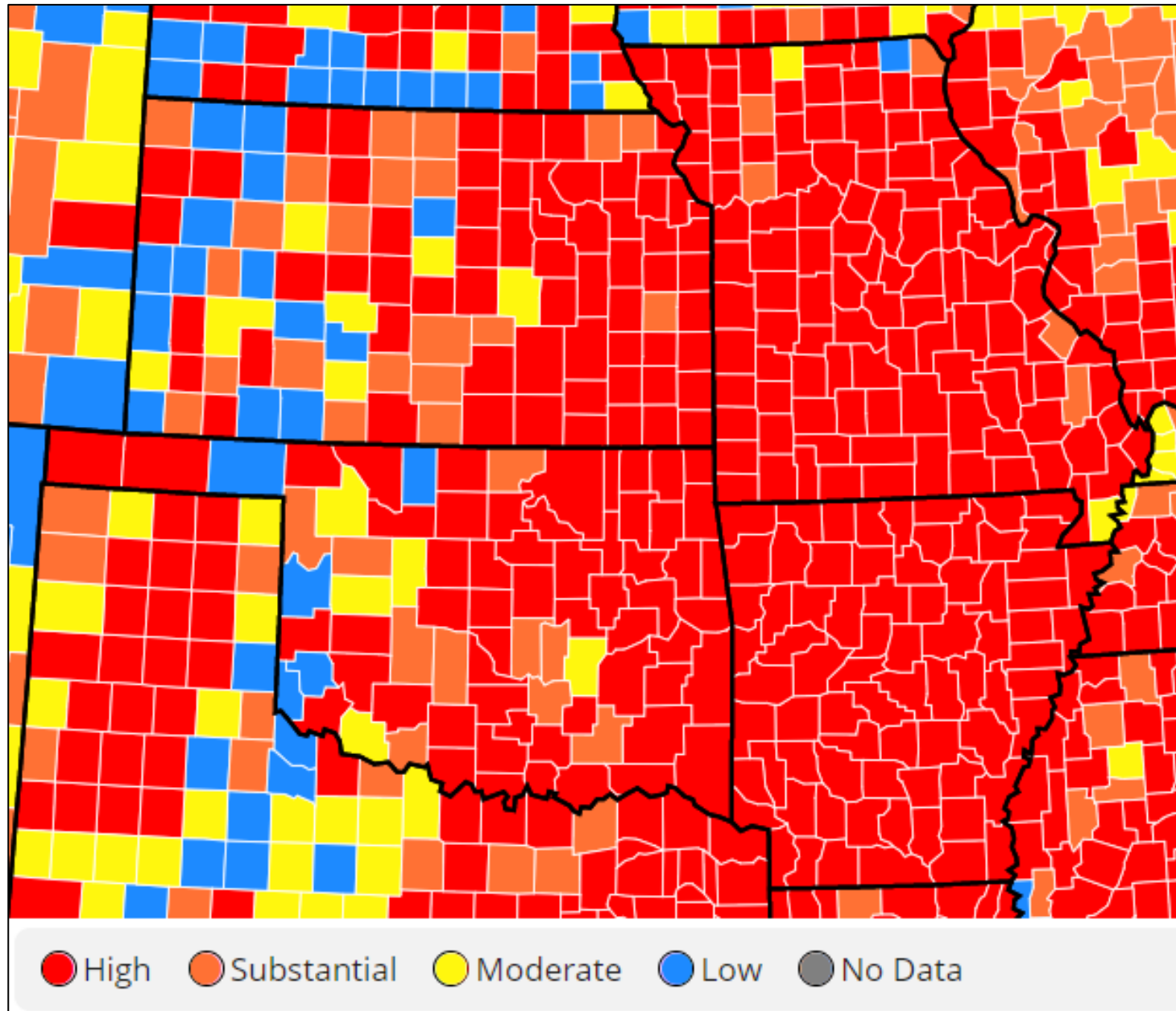


Through July 21

Hospitalizations – Confirmed Cases



*3-day Average



Community Transmission Rate

Time Period: July 17, 2021 - Jul 23, 2021.

<https://covid.cdc.gov/covid-data-tracker/#county-view>

RED - ≥ 100 new cases per 100,000 per week; or $\geq 10\%$ rate of positive COVID tests in the past week.

Data refreshed: July 25